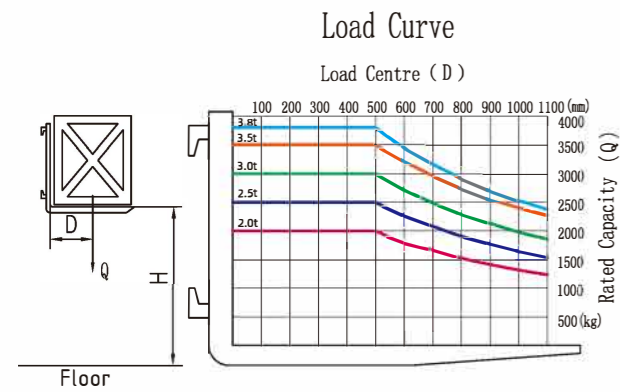


## Configuration Option Sheet

E Series 2-3.8t

Configuration	Multi Function Display	Driving/lifting/steering Computer Controlled	Pedal Rubber	Lithium Battery	Emergency Stop Switch
	Full Set of LED Lights	Reversing Buzzer	Safety seat	Full-hydraulic Power Steering	Wide view mast
	Low Resistance Tyres	Two-piece Multiplex Valve	High Efficiency AC Drive Motor	Gear Pump with Low Noise	Energy Efficient Dynamic Signal
	Load Sensing Hydraulic Traction Pin	Roof Weather Canopy	Charging Indicator	Electric Horn	Backup Mirror
Optional	Cabin	Cold A/C	Heater	Suspension Seat	Lifting Potentiometer
	Battery Charger	Lithium Battery	Rotating Buzzer Warning Light	Rear Working Light	Warning Light
	Solid Tyres	Non Marking Tyres	Large Capacity Battery	Tailored backrest	Widen Fork Carriage
	Protective Net	Electric Fan	Reversing Handrail Horn	Corner Positioner	Reversing Radar
	Fork Extensions	Tilt cylinder protection	Steering cylinder protection	Custom Colours	Multiple Hydraulic Attachments

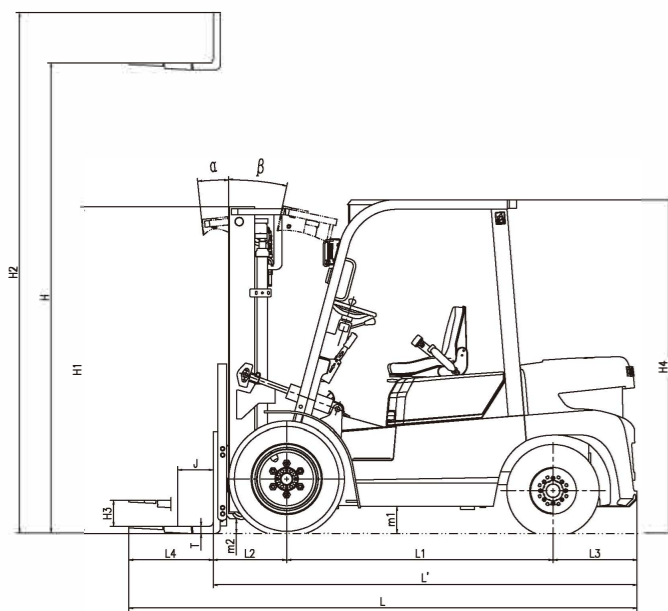
## Load Curve



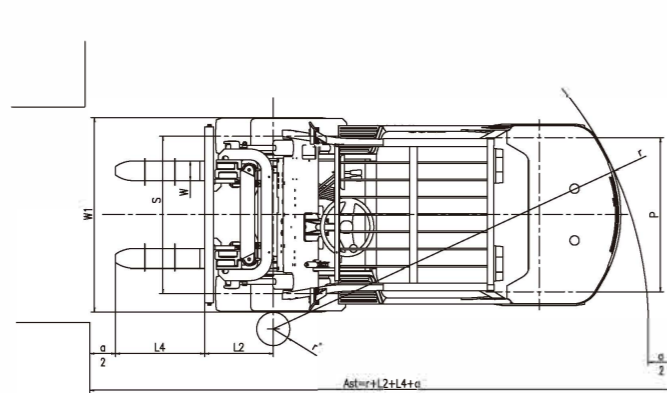
- 3.5t
- 3.0t
- 2.5t
- 2.0t

Note: The vertical axis represents the rated lifting weight, and the horizontal axis represents the load center distance. The load center is calculated from the front of the fork, and the base point of the standard load refers to the center position of a cube with a load side length of 1000 mm. When the mast is tilted forward, non-standard forks are used, or loads exceeding the normal width are loaded, the load capacity will be reduced. Through the load curve chart, the carrying capacity of various load centers can be understood in time.

## Structure Diagram



Ast : Right Angle Stacking Aisle Width  
a : Clearance



# LONKING

# LONKING



## 2-3.8t E Series Counterbalance Electric Forklift Truck



OHSAS45001:2023



ISO14001:2015



ISO9001:2015



CE CERTIFICATE



UKCA CERTIFICATE



### Strong stability

Continuing the same tonnage diesel forklift mast, the structure is safe and reliable and suitable for various working conditions.

### More flexible control

Adopting the latest integrated electro-hydraulic lift control system, the speed of lifting and lowering can be mastered more comfortably.

### Charge and use as you go

The application industry's first three-phase/single-phase switchable charger is suitable for various charging environments and can be charged and used at any time.

### Comfortable operation

It adopts interactive ergonomic design to improve operating comfort; it is equipped with a wide-field mast system to improve driving visibility.

### Well-adapted

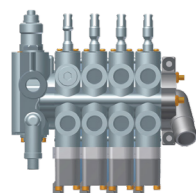
The small diameter steering wheel and large angle adjustment can meet different driving needs and reduce the operator's arm fatigue.

### Low maintenance

It has over 95% commonality with diesel forklift parts. It is equipped with a maintenance-free lithium battery and has low maintenance costs in the future.



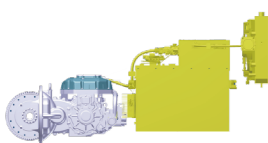
## Product details and advantages



Using the latest electro-hydraulic lifting control system, there is no need to worry about the throttle size control problem. For the lifting and lowering speed can be more easily controlled.



The machine mast, drive axle, steering axle, tires and other components are exactly the same as those of LONKING diesel forklifts of the same tonnage, making subsequent maintenance more convenient.



The electrical system adopts new energy vehicle-grade high-voltage technology to reduce current output and adopts the principle of low-voltage control of high-voltage for safer operation.



Use advanced power display meter, timing meter and fault self-diagnosis meter to accurately display under harsh working conditions.

## Overall Specifications

E Series2-3.8t

Character		LONKING						
1.01	Manufacturer	LONKING						
1.02	Model	CPD20EFL	CPD25EFL	CPD30EFL	CPD35EFL	CPD38EFL		
1.03	Power type	Electrical (AC)						
1.04	Rated capacity	Q	kg	2000	2500	3000	3500	3800
1.05	Load center	J	mm	500	500	500	500	500
Dimensions								
2.01	Max. height (with backrest)	H2	mm	4040	4040	4110	4110	4110
2.02	STD Max lifting height	H	mm	3000	3000	3000	3000	3000
2.03	Overhead guard height	H4	mm	2110	2110	2130	2130	2130
2.04	Overall length (with fork)	L	mm	3590	3650	3850	3900	3900
2.05	Wheelbase	L1	mm	1650	1650	1760	1760	1760
2.06	Front overhang	L2	mm	470	470	480	496	496
2.07	Rear overhang	L3	mm	410	470	540	570	570
2.08	Min ground clearance (Chassis/Mast)	m1/m2	mm	150/110	150/110	160/130	165/130	165/130
2.09	Overall width (outside)	W1	mm	1160	1160	1240	1240	1240
2.10	Fork adjustment range		mm	243-1037	243-1037	252-1092	252-1092	252-1092
2.11	Fork size(STD)		mm	1070x120x40		1070x122x45	1070x122x50	
2.12	Front wheel tread	S	mm	970	970	1000	1000	1000
2.13	Rear wheel tread	P	mm	980	980	980	980	980
2.14	Min turning radius(outside)	r	mm	2250	2300	2520	2540	2540
2.15	Min aisle width for pallet 1000x1200,crossways	Ast	mm	3900	3970	4270	4306	4306
2.16	Min aisle width for pallet 800x1200,lengthways	Ast	mm	4030	4100	4400	4436	4436
Tyres								
3.01	Capital W (F/R, X=Driven wheels)			X=2/2				
3.02	Tyres type (F/R)			Pneumatic				
3.03	Tyres size,front			7.00-12-12PR		28x9-15-14PR		
3.04	Tyres size,rear			6.00-9-10PR		6.50-10-10PR		
Performance and other details								
4.01	Max. travelling speed,loaded/unloaded	km/h	13/12	13/12	13/12	13/12	13/12	13/12
4.02	Lifting speed, loaded/unloaded	mm/s	350/300	350/280	380/270	310/220	310/200	
4.03	Lowering speed,loaded/unloaded	mm/s	≥300/≤600	≥300/≤600	≥300/≤600	≥300/≤600	≥300/≤600	
4.04	MAX. gradeability,loaded/unloaded	%	20/15	20/15	15/15	15/15	15/15	
4.05	Service weight(with oil & water)	kg	3255	3560	4020	4420	4680	
4.06	Axle load, F/R(loaded)	kg	4670/585	5330/730	6170/850	6970/950	7460/1020	
4.07	Axle load, F/R(unloaded)	kg	1340/1915	1530/2030	1680/2340	1860/2560	1960/2720	
4.08	Drive motor	kw	10	10	10	10	10	
4.09	Lift motor	kw	15	15	15	15	15	
4.10	Controller		FANJI					
4.11	battery(voltage/capacity)	V/Ah	80/205	80/205	80/205	80/205	80/205	

## Mast Specifications

E Series 2-3.8t

Mast Type	Mast Model	H2 Max Lifting Height (mm)	Load Capacity (j=500mm) (kg)					H1 Lowered Mast Height(mm)			H3 Free Lifting Height (mm)			Mast Tilting Angle (°)α/β	
			2T	2.5T	3T	3.5T	3.8T	2-2.5T	3T	3.5-3.8T	2-2.5T	3T	3.5-3.8T		
2 Stage Standard Mast	M200	2000	2000	2500	3000	3500	3800	1525	1555	1670	140	145	150	6/12	
	M250	2500	2000	2500	3000	3500	3800	1775	1805	1920	140	145	150	6/12	
	M270	2700	2000	2500	3000	3500	3800	1875	1905	2020	140	145	150	6/12	
	M300	3000	2000	2500	3000	3500	3800	2025	2055	2170	140	145	150	6/12	
	M330	3300	2000	2500	3000	3500	3800	2175	2205	2320	140	145	150	6/12	
	M350	3500	2000	2500	3000	3500	3800	2275	2305	2420	140	145	150	6/12	
	M370	3700	2000	2500	3000	3500	3800	2375	2405	2520	140	145	150	6/12	
	M400	4000	2000	2500	2950	3200*3400	3600*3700	2575	2605	2720	140	145	150	6/8	
	M425	4250	1850*2000	2250*2500	2850*3000	3100*3300	3350*3600	2700	2730	2845	140	145	150	6/8	
	M450	4500	1600*1900	2100*2400	2600*2800	2900*3100	3100*3500	2825	2855	2970	140	145	150	6/8	
2 Stage Free Mast	M475	4750	1400*1800	1900*2200	2350*2600	2700*2900	2900*3300	2950	2980	3095	140	145	150	6/8	
	M500	5000	1300*1700	1600*1900	2100*2400	2400*2750	2700*3100	3075	3105	3220	140	145	150	6/8	
	M550	5500	1200*1500	1200*1700	2000*2400	2200*2400	2350*2700	3375	3405	3520	140	145	150	3/6	
	M600	6000	1000*1300	900*1400	1500*2000	1800*2200	1900*2350	3625	3655	3770	140	145	150	3/6	
	Note: * means capacity of double front wheels.														
	2 Stage Free Mast	ZM200	2000	2000	2500	3000	3500	3800	1525	1590	1690	910	830	875	6/12
		ZM250	2500	2000	2500	3000	3500	3800	1775	1840	1940	1160	1080	1125	6/12
		ZM270	2700	2000	2500	3000	3500	3800	1875	1940	2040	1260	1180	1225	6/12
		ZM275	2750	/	/	/	/	/	/	/	/	/	/	/	/
		ZM300	3000	2000	2500	3000	3500	3800	2025	2090	2190	1410	1330	1375	6/12
ZM330		3300	2000	2500	3000	3500	3800	2175	2240	2340	1560	1480	1525	6/12	
ZM350		3500	2000	2500	3000	3500	3800	2275	2340	2440	1660	1580	1625	6/12	
ZM370		3700	2000	2500	3000	3500	3650*3800	2375	2440	2540	1760	1680	1725	6/12	
ZM375		3750	/	/	/	/	/	/	/	/	/	/	/	/	
ZM400		4000	2000	2500	2850	3250*3500	3550*3700	2575	2640	2740	1960	1880	1925	6/8	
ZM450	4500	1600*1900	2100*2400	/	/	/	2825	/	/	2210	/	/	6/8		
Note:2-2.5T free lifting height with backrest minus 395mm. 3T free lifting height with backrest minus 315mm. 3.5-3.8T free lifting height with backrest minus 255mm.															
Note: * means capacity of double front wheels.															
3 Stage Free Mast	ZSM360	3600	1900	2400	2900	3300	3700*3800	1840	1870	1970	1225	1075	1080	6/8	
	ZSM400	4000	1800*1900	2300	2800	3300	3500*3700	1975	2005	2100	1360	1210	1215	6/8	
	ZSM430	4300	1750*1900	2200*2400	2700*2900	2900*3100	3200*3600	2070	2100	2200	1455	1305	1310	6/8	
	ZSM435	4350	/	/	/	/	/	/	/	/	/	/	/	/	
	ZSM450	4500	1600*1800	2000*2300	2500*2700	2800*3000	3100*3550	2140	2170	2270	1525	1375	1380	6/8	
	ZSM470	4700	1300*1700	1800*2100	/	/	/	2210	/	/	1595	/	/	6/8	
	ZSM480	4800	1250*1700	1700*2000	2250*2450	2500*2750	2800*3150	2240	2270	2370	1625	1475	1480	6/8	
	ZSM500	5000	1100*1600	1500*1800	2100*2300	2300*2600	2600*3100	2305	2335	2435	1690	1540	1545	6/8	
	ZSM540	5400	/	/	/	/	/	/	/	/	/	/	/	/	
	ZSM550	5500	800*1300	1100*1500	1500*2000	1700*2200	2350*2800	2470	2500	2600	1855	1705	1710	3/6	
ZSM600	6000	600*1100	800*1300	1200*1800	1300*2000	1650*2550	2690	2720	2820	2075	1925	1930	3/6		
ZSM650	6500	400*800	600*1000	900*1500	1000*1600	1100*1800	2880	2910	3010	2265	2115	2120	3/3		
Note: 2-2.5T free lifting height with backrest minus 395mm. 3T free lifting height with backrest minus 280mm. 3.5-3.8T free lifting height with backrest minus 280mm.															
Note: * means capacity of double front wheels.															

Note: Load capacity is reduced 150kg with optional side shifter for 2-2.5t forklift, and 200kg for 3-3.8t forklift.